



Brant Community Healthcare System Foundation

STEWARDSHIP

REPORT

LOOKING BACK ON 2023-2024

CONTACT US :

-  200 Terrace Hill St. Brantford N3R 1G9
-  519-751-5510
-  bchsysfoundation.org
-  foundation@bchsys.org
-  bchsysfoundation.org/social





Investing *together* to re-imagine *healthcare*

With this report we celebrate the achievements of the past year, including the Foundation’s most successful gala on record and an incredible Hope for Healthcare campaign. Together these raised over \$715,000 for the Emergency Department (ED) Renovation Improvement Project and the purchase of new patient equipment for the ED. Celebrations were held to mark the arrival of a new \$2 million CT Scanner and the opening of the Pediatric Acute Referral Service Clinic. Both of these investments were made possible only because of donor dollars. I am truly humbled and inspired by the strength of this community support and your commitment to local healthcare.

**Dr. Lee Ferrao, Chair
BCHS Foundation**



We in the Foundation know that it is the people behind the donations who are making a difference. This is why, together, we work so diligently to respect, honour and be accountable to you, the donors we are privileged to work with. We are deeply grateful for your generous contributions to BCHS Foundation campaigns, events, activities and appeals. Through this stewardship report we offer a snapshot of how your gift and investment in local healthcare is truly transforming our community. With sincere thanks,

**Kari Wilson, Executive Director
BCHS Foundation**



The 2024-2025 BCHS Foundation Board of Directors

Dr. Lee Ferrao Chair
Heather Wilson Past Chair
Ken McNaughton Vice Chair
Lisa Ligori Treasurer
Stephanie Christie Director
Linda LeBourdais-Near Director

Wes Mik Director
Kero Moussa Director
Teja Solleti Director
Andy Straisfeld Director
Cindy Swanson Director
Caitlin Turner Director

David Diegel BCHS Board Chair
(Cross Appointment, ex-officio)
Kari Wilson Corporate Secretary/Executive
Director BCHS Foundation (ex-officio)
Bonnie Camm BCHS President & CEO (ex-officio)
Adriano Parotta BCHS Volunteer
Association (guest)



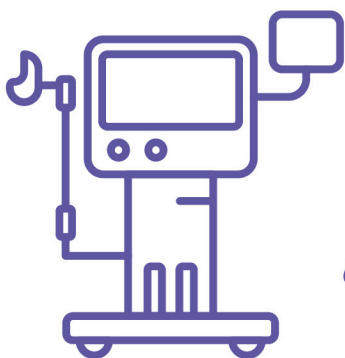
Donations By The Numbers



2,064 Donors



5,699 Gifts



*Over **\$2.5 Million**
in patient equipment
purchased because of
donor dollars!*

Major Giving \$1,230,409

Legacy Giving \$530,411

Special Events \$377,056

Annual & Monthly
Giving \$233,061

Leadership Giving \$109,951

Memorial & Tribute
Giving \$47,290

Donor Dollars at Work **Expanding CT Care**

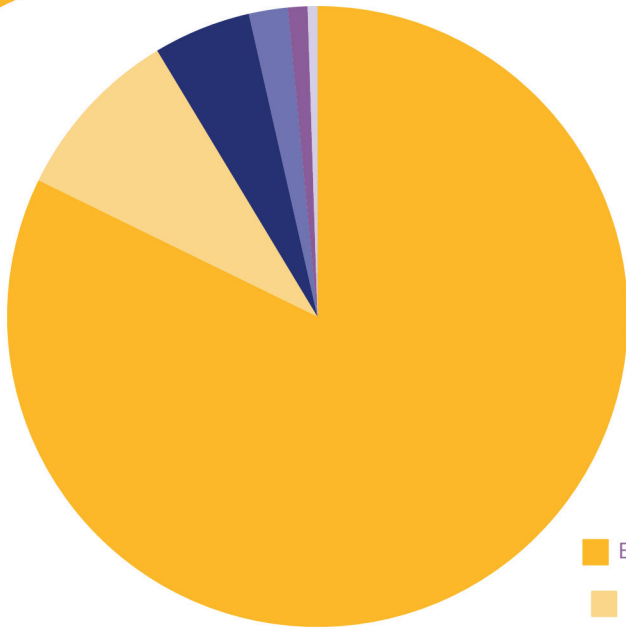
In July 2023 the BCHS offered improved access with the addition of a new CT scanner. Demand for CT scans has increased by more than 200% since 2010. Diagnostic Imaging at BCHS operates 24/7 and performs over 50,000 CT scans every year.

The BCHS Foundation extends its heartfelt gratitude to our community donors whose contributions made the **\$2 million** purchase possible.





Your Giving Breakdown



- Emergency Department
- Family Birthing Centre
- Top Priority Equipment Needs
- Pediatrics
- Willett
- Other

The Brant Community Healthcare System Foundation is committed to raising funds to support top priority needs at the Brantford General Hospital and Willett, Paris.

Essential medical equipment is not fully covered by the Ministry of Health funding model, and it is only through the generosity of donors that we are able to purchase the critical tools and technology used every day for patient care at the BCHS.

Thank You!

Donor Dollars at Work Pediatric Acute Referral Service

In November 2023 the BCHS Foundation celebrated the opening of the newly renovated Pediatric Acute Referral Service (PARS) clinic at the Brantford General site. The PARS clinic sees children requiring more urgent pediatric consultation and enables them to receive care in a more comfortable environment.

Because of generous contributions from community donors, the BCHS Foundation was able to grant **\$575,000** in support of this much needed renovation and patient equipment. Special thanks to the Rotary Club of Brantford Sunrise for their ongoing significant support of this project.





Spotlight On Patient Equipment

In 2023-2024, your gifts helped to purchase many critical pieces of patient equipment. Some of these are featured below:



BabyLeo and BabyRoo Infant Warmers, NICU: BabyLeo isolettes provide a safe environment with temperature, moisture and oxygen controls to ensure optimal conditions for development. Equipped with all the features of a regular isolette, the BabyRoo has added warming functions and is utilized for more fragile infants.

Total investment \$203,250



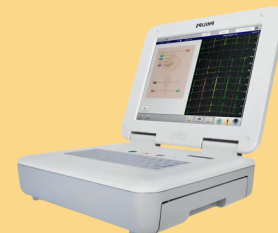
Rapid Infuser, Emergency Department: Rapidly delivers life-saving, warmed blood and fluid at the touch of a button, combating hypothermia and blood loss. Dry, inductive heating technology and two infrared temperature sensors provide consistent normothermic fluid within seconds. Built-in ultrasonic air detectors and patient safety valve wand automatically safeguard against air emboli.

Total investment \$45,850



Electrocardiograms, Emergency Department: Designed to simplify diagnostic ECG testing and streamline workflow. Displays Critical Value statements so that caregivers can determine the need for urgent care. Allows clinicians to quickly take action and reduce the time from the discovery of a critical cardiac event to intervention.

Total investment \$33,750



Birthing Bed, Family Birthing Centre: Electronically operated with adjustable head, midsection, and foot ends. Adjustable footrests and seat accommodates a variety of patients. Provides increased comfort and security for both mom and caregivers.

Total investment \$20,700





Spotlight On Patient Equipment

continued...



Slide Stainer, Laboratory:

Capable of staining up to 60 slides per hour. Helps maximize productivity and delivers quality results through user-defined features and precision controls. Minimal maintenance helps maximize lab uptime.

Total investment \$23,400



Medication Fridge, Pharmacy: Keeps oncology medication safe by maintaining constant temperature. Early warning alarm system detects issues before malfunction occurs. Features digital display for easy monitoring, rapid cool-down, and smart defrost system.

Total investment \$11,100



Standing Aids, Critical Care Unit: Enables a single caregiver to assist patients with sit to stand transfers throughout the day. Offers an alternative to a wheelchair for more mobile patients.

Total investment \$12,000



Tonometer, The Willett:

Extensive flexibility in measuring eye pressure whether the patient is standing, sitting, elevated or laying down. Requires no anesthetic drops, air or specialized skills for its use.

Total investment \$9,000



Examination Tables, Oncology: Adjustable backrest and head section. Antibacterial upholstery, gas struts, and a breathing hole ensures patient comfort and safety. Wheelchair accessible for patient transfers.

Total investment \$7,600

The BCHS Foundation depends on businesses, foundations, community groups, and individuals for their dedication and generosity.

Thank You! Every dollar counts!

